



SCIENCE PROJECTS  
INTERACTIVES



# SCIENCE PROJECTS INTERACTIVES



We design and build really fun interactive exhibitions and exhibits that inspire, educate and excite.

# SCIENCE PROJECTS INTERACTIVES



Science Projects was set-up over 20 years ago as a non-profit organisation 'dedicated to the promotion of science to the public by creating interactive exhibitions'. Since then, we have created exhibits for projects around the world, reaching an audience of millions.

These days, interactives are used to interpret a range of different subjects and are firmly recognised as an effective way of attracting new audiences, even increasing visitor numbers.

We are different not only because we design and build exhibits; we also run a successful science centre and travelling exhibitions. Importantly, our underlying philosophical roots have always been committed to the promotion of learning.

We are happy to discuss your ideas whether it is for a single exhibit or an entire centre.

“ WE DESIGN AND BUILD INTERACTIVE EXHIBITIONS AND EXHIBITS. ”

# SERVICES – YOUR ONE STOP SHOP



We offer a complete service. We design interactive exhibitions, build the exhibits, create the graphics, install the exhibition and produce the necessary documentation and paperwork.

Whether your interactive project is a large-scale centre or a single exhibit, we can support you with a flexible design service adapted to suit your needs.

We also welcome working with design companies - we are frequently brought in as their interactive specialists.

## EXHIBITION

- Consultancy
- Project management
- Feasibility studies
- Technical design review
- Content
- Research
- Design
- Sub-contracting

## EXHIBITS

- Design
- Prototype
- Evaluate
- Fabricate
- Install

## GRAPHICS

- Design
- Copywriting
- Artworking
- Installation
- Multi-media

## ADMINISTRATIVE

- Progress reports
- O&M manuals
- Risk assessments
- Safety tests
- Post-completion support

# OUR APPROACH – DESIGN & BUILD

Creating exhibits sturdy enough to be pushed, pulled and prodded by thousands of people over thousands of hours requires a strong relation between design and production.

Design and build is an approach that integrates the design process with prototyping, development, production and testing.

The 3D processes enable us to identify strengths and weaknesses in the design and ensure exhibits are as interactive as possible, durable and maintenance-free.

## *THE EXHIBITS*

We create new exhibit designs and adaptations of existing concepts. Over the years we have created many hundreds of exhibits on subjects ranging from art, to science, to economics. We are able to discuss materials, production methods and styles to provide a tailored solution for your budget.



A Science Projects Art Machine undergoes testing and evaluation.



The classic Bernoulli Blower...customised to suit different venues and budgets.

# CLIENT LIST

*SOME OF THE  
INSTITUTIONS WE HAVE  
WORKED WITH.*

## *UNITED KINGDOM*

Bank of England  
Big Pit, Wales  
Bodelwyddan Castle, Wales  
Techniquest, Cardiff  
Bristol 2000 Project  
Centre for Life, Newcastle  
Tyne & Wear Museum  
Sensation, Dundee  
Discovery, Dundee  
Elsecar, Barnsley  
Eureka! Halifax  
Glasgow Science Centre  
Guildford Discovery Centre  
Horniman Museum, London,  
Hunterian Museum, Glasgow  
Jersey Maritime Museum  
Legoland, Windsor  
Living Coasts, Torquay  
London Transport Museum  
London Wetland Centre  
London Zoo  
RAF Museum, Hendon  
National Marine Aquarium, Plymouth  
National Maritime Museum, Cornwall  
National Maritime Museum, London  
National Museums Liverpool  
Natural History Museum, London  
Newton's House, National Trust  
Nike, UK  
Powergen, various sites  
Quarry Bank Mill, Cheshire  
Royal Naval Museum, Portsmouth  
Satrosphere, Aberdeen, Scotland  
Sellafield Visitor Centre  
Snibston Discovery Park  
The Green House, Plymouth  
The Science Museum, London  
ThinkTank, Birmingham  
British Waterways, various sites  
Museum of Science & Industry, Manchester

## *NORTH AMERICA*

Science World, Vancouver, Canada  
Children's Museum of Indianapolis  
AirVenture Museum, Oshkosh, USA  
Lancaster Science Factory, USA

## *EUROPE*

Focus Research, Belgium  
Technopolis, Belgium  
Musée de Parentville, Belgium  
Danfoss Universe, Denmark  
Kattegat Science Centre, Denmark  
Heureka, Finland  
Phaeno, Wolfsburg, Germany  
University College Cork, Ireland  
Vitenfabrikken, Sandnes, Norway  
Bergen Vitensenter, Norway  
Norwegian Petroleum Museum  
Norwegian Museum of Science & Technology  
Madeira Story Centre, Portugal  
Ravelin, St. Petersburg, Russia  
Technorama, Switzerland  
Technology Museum, Amsterdam  
IMPULS, Amsterdam  
National Motor Museum, The Netherlands  
New Metropolis, The Netherlands

## *THE MIDDLE EAST*

Jordan Children's Museum  
The Scientific Centre, Kuwait  
British Council, Middle East  
Jeddah Science Centre  
Muslim Heritage Consulting  
Glaxo Holdings, Saudi Arabia  
SciTech, Saudi Arabia  
Sharjah Children's Discovery  
Botanical Museum, Sharjah  
Sharjah Aquarium  
Sharjah Islamic Museum  
Sharjah Natural History Museum

## *AFRICA*

British Council, Ethiopia  
Ethiopian Science Centre  
Cite des Sciences, Tunisia

## *ASIA*

BP Visitor Centre, Azerbaijan  
Singapore Science Centre  
National Science Museum, Thailand  
Petrosains, Malaysia

# IN-HOUSE SKILLS



## *PROJECT MANAGEMENT*

Overseeing your exhibition from conception to completion

## *DESIGN*

For exhibitions that offer a rich interactive learning experience.

## *FABRICATION*

We have a highly experienced team with a wide range of creative and practical expertise.

## *EXHIBIT DEVELOPMENT & PROTOTYPING*

Evaluate, assess and test.

## *PROGRAMMING & SCREEN TECHNOLOGY*

Intuitive and dynamic solutions integrated with mechanical exhibitory.

## *ELECTRONICS*

Bespoke design and production.

## *GRAPHIC DESIGN*

From complete displays to supporting literature.

The Big Machine: the star attraction at the Science Museum's Launchpad Gallery, London UK

# GALLERY

PROJECTS WE HAVE WORKED ON.



Optics exhibition,  
Satrosphere, Aberdeen



Energy Wall, Vitenfabrikken  
(The Science Factory), Norway



Classic science exhibits,  
Centre for Life, Newcastle UK



Exhibition about flight, RAF  
Museum, London UK



Air and fluids exhibition, Science World, Vancouver Canada



Energy exhibition, The  
Scientific Centre, Kuwait



Children's museum,  
Sharjah Discovery Centre



Laser Amazer, Science World,  
Vancouver, Canada



Oil & Gas exhibition, The  
Scientific Centre, Kuwait



Big Machine, the Science  
Museum, London UK

“

FOR MORE  
PROJECTS, GO TO  
THE PORTFOLIO  
ON OUR WEBSITE

”

[www.science-projects.org](http://www.science-projects.org)

# GALLERY

“ WATER EXHIBITS ARE A SPECIALITY ”



The Water Maze, outdoor water interactive on the grounds of Hever Castle, Kent UK



Solar controlled water fountain at Danfoss University



Water Circuit with multiple interactive elements that encourage group activity\*



Model of a river course with interactive features\*



WaterPlay area with interconnecting activity tanks\*



Water area for the Science Museum's Launchpad, installed in 1995



WaterCities travelling exhibition

\*The Observatory Science Centre, Herstmonceux, UK

# GALLERY



1001 Inventions travelling exhibition for Muslim Heritage



Energy transfer wall, The Scientific Centre, Kuwait



Science of Spying at the Science Museum, London



Giant tornado, Singapore Science Centre



Exhibit about weaving, Liverpool Museums UK



Sound Tubes sculpture and exhibit, Caspian Energy Centre, Azerbaijan



The Art Machine, various venues



Mars Rover, ThinkTank, UK



The Arts of Art, travelling exhibition



Rowing skeleton, for Jordan Children's Museum



“

THANKS FOR THE  
FANTASTIC WORK  
YOU HAVE DONE,  
YOUR INVOLVEMENT  
WITH THE CENTRE  
HAS PROVEN TO BE  
INSPIRATIONAL TO US.

”

Balancing Platform\*  
interactive exhibit



Giant Archimedes Screw  
and Energy Track\*



Interpreting economics  
for the Bank of England



eXplore!, interactive playground,  
London Wetland Centre



Energy house, Steven's Croft  
Biomass Power Station



Energy house, Norwegian  
Museum of Science & Technology



Wetlands Secrets,  
London Wetland Centre



The Splash Zone at Animal  
Adventure, London Zoo



An exhibition about waste,  
Centre for Life, Newcastle



Hyperboloid  
exhibit\*

\*The Observatory Science Centre, Herstmonceux, UK

# ABOUT US



IT ALL STARTED IN 1987 WITH THE  
DISCOVERY DOME TRAVELLING EXHIBITION

## FROM 1989 - TRAVELLING EXHIBITIONS FOR SCHOOLS



ScienceWorks is a set of portable, curriculum-based exhibitions created especially for schools. Designed to be fun as well as educational.

**ScienceWorks**  
Hands-on science exhibitions  
designed for schools

## FROM 1991 - EXPLORING SCIENCE TRAVELLING EXHIBITIONS



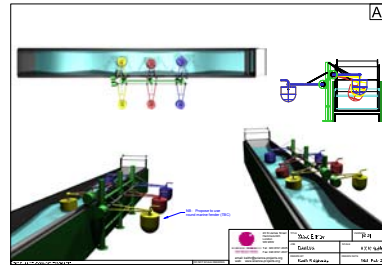
SECRETING  
BRIGHTNESS  
OPTICS  
MEDIEVAL  
MACHINES  
senses  
ANCIENT  
WISDOM  
THE ARTS OF  
ART  
GOOD  
VIBRATIONS...  
00000000  
00000000  
FEEL THE  
FORCE



Hands-on exhibitions for museums, science centres and festivals. Very interactive, easy to set up, for all ages and a wide range of subjects

**EXPLORING SCIENCE**  
TRAVELLING EXHIBITIONS

## FROM 1989 - DESIGN AND BUILD SERVICE FOR OTHERS



We've been creating interactives continuously for this field for over 20 years, in over 200 projects, for over 180 clients; earning ourselves a reputation of being one of the most experienced, reliable and trusted suppliers in the world.



## FROM 1995 - THE OBSERVATORY SCIENCE CENTRE



Before we came along this was the home of one of the world's leading astronomical establishments: The Royal Observatory. Today it continues to be a place of learning and discovery for the public with its exhibits, events and tours.



the OBSERVATORY science centre

*INTERACTIVE EXHIBITION  
DESIGN & BUILD*



part of Science Projects Ltd



**SCIENCE PROJECTS**

14, Colvile Road  
London  
W3 8BL, UK

T: +44 20 8741 2305  
F: +44 20 8741 2307  
E: [info@science-projects.org](mailto:info@science-projects.org)

[www.science-projects.org](http://www.science-projects.org)



Science Projects Ltd is a non-profit organisation established in 1986, specialising in the promotion of learning through interactive exhibitory.